

# A New Species of Pseudoscorpion from Laguna Beach, California

MARGARET LYONS MOLES

*Chelanops lagunæ* n. sp.

Measurements—Length of animal including mandibles, 2.5 mm; length of palps, 2.5 mm.; length of claw, 1.05 mm. The whole animal is three times as long as it is broad.

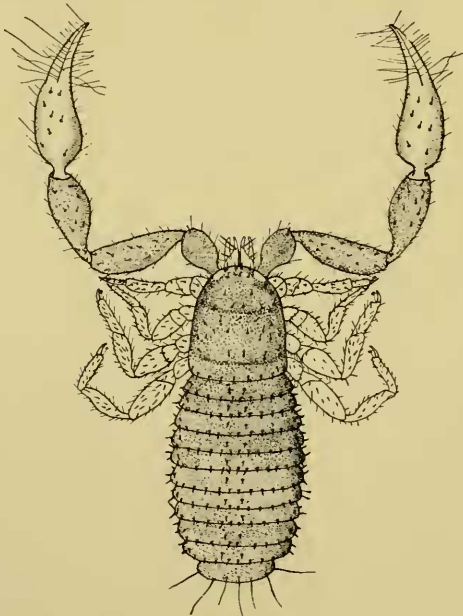


Figure 1. *Chelanops lagunæ* n. sp., from above, X 25.

Color—Cephalothorax reddish brown, palps reddish brown, legs pale yellowish brown and abdomen light brown.

Cephalothorax not quite as broad as long. Front margin evenly rounded, sides slightly convex and lower margin truncated. Two distinct sutures, two indistinct eye spots.

Abdomen one and one-half times as long as it is broad and divided into eleven distinct scutæ. Scutæ well rounded and all of the same size except the last one, which is longer and broader and has long simple hairs on its base.

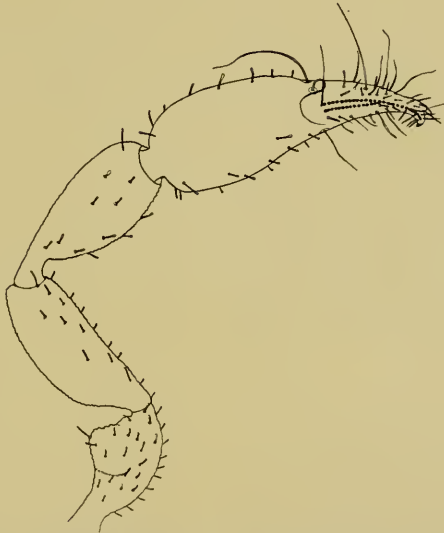


Figure 2. *Chelanops lagunae* n. sp., palps showing conical teeth, X 50.

The whole body is finely granulated and furnished with short clavate hairs.

Palps, length 2.5 mm., as long as body. Coxa smooth, trochanter as usual. Femur shorter than cephalothorax, pedicellate, broadest near the base, concave on inner margin near tip. Tibia a little shorter and slightly broader than the femur, pedicellate, evenly convex on outer side, slightly convex on

inner side near base and beyond slightly concave. The trochanter, femur and tibia finely granulated and sparsely furnished with short clavate hairs. Claw, moderate size, as long as cephalothorax plus mandibles. Fingers slender, quite strongly curved, nearly as long as the hand, the inner margins provided with a row of conical teeth. Hand strongly convex on inner side, tapering to the fingers, not so strongly convex on the outer side. Hand finely granulated and with few clavate hairs, fingers smooth with many long simple tactile hairs.

Mandibles robust for the size of animal; the fixed finger provided with many small teeth. Serrula attached throughout length of moveable finger. Flagellum separated into four thin parts. Spinnerets short and transparent. Mandibles covered with long simple hairs.

Legs, each with a trochantin, claws simple, legs covered with strong clavate hairs.

*Habitat*—Sycamore Canyon, near Laguna Beach. Collected from sycamore trees about a quarter of a mile from the ocean.

The species differs from *Chelanops dorsalis* Banks by having two indistinct eye spots.

(Contribution from the Zoological Laboratory of Pomona College.)